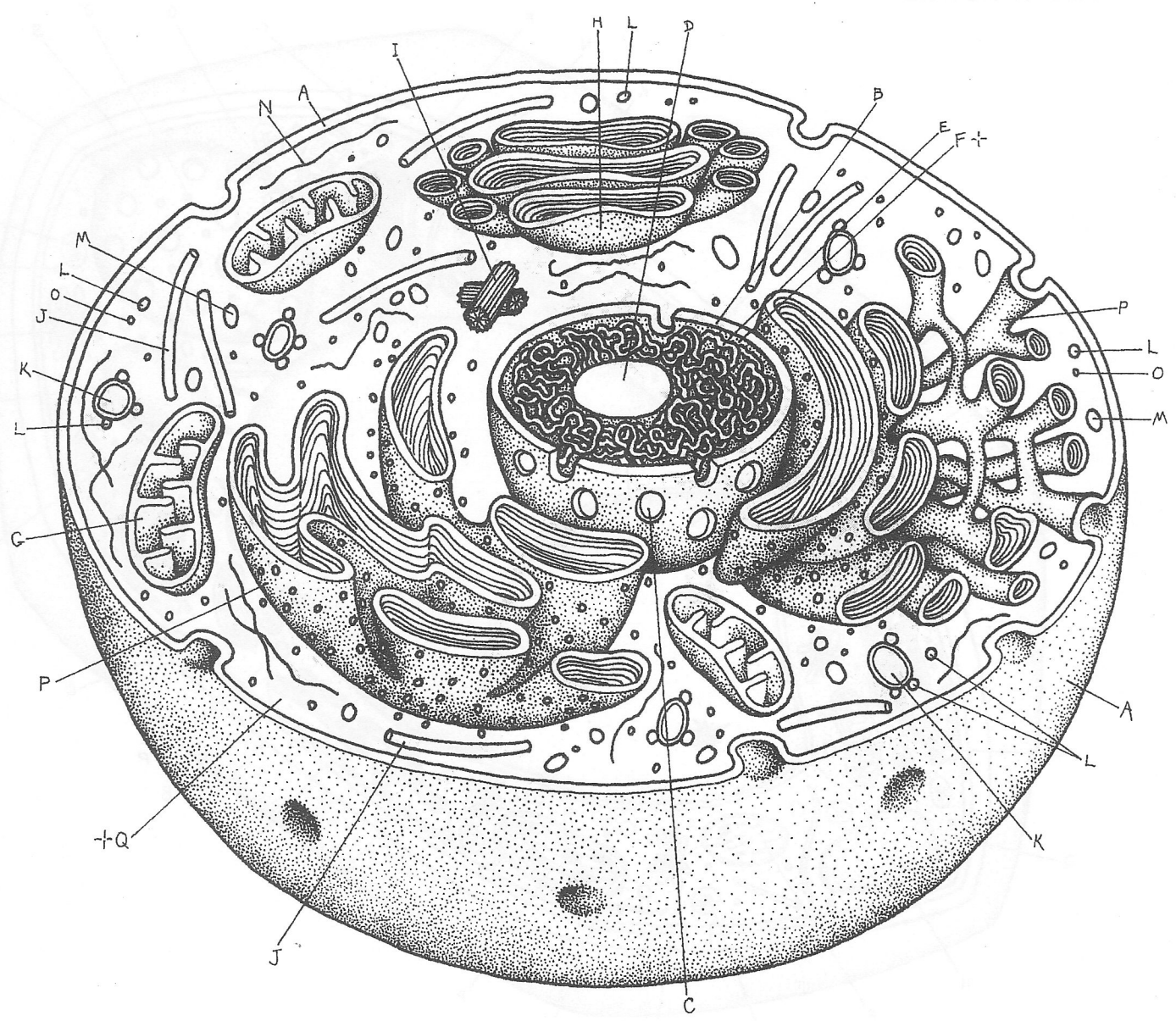


# ANIMAL CELL.

- CELL MEMBRANE<sub>A</sub>
  - NUCLEUS<sub>★</sub>
  - NUCLEAR ENVELOPE<sub>E</sub>
  - NUCLEAR PORE<sub>C</sub>
  - NUCLEOLUS<sub>B</sub>
  - CHROMATIN<sub>E</sub>
  - NUCLEAR SAP<sub>F,†</sub>
  - CYTOPLASM<sub>★</sub>
  - MITOCHONDRION<sub>G</sub>
  - GOLGI COMPLEX<sub>H</sub>
- CENTRIOLE<sub>I</sub>
  - MICROTUBULE<sub>J</sub>
  - VACUOLE<sub>K</sub>
  - LYSOSOME<sub>L</sub>
  - MICROBODY<sub>M</sub>
  - MICROFILAMENT<sub>N</sub>
  - RIBOSOME<sub>O</sub>
  - ENDOPLASMIC RETICULUM<sub>P</sub>
  - HYALOPLASM<sub>Q,†</sub>



# PLANT CELL.

CELL MEMBRANE,  
CELL WALL,  
PLASMODESMA,  
VACUOLE,  
TONOPLAST,  
CRYSTAL,  
PLASTIDS,  
CHLOROPLAST,  
LEUCOPLAST,  
CHROMOPLAST,  
GOLGI COMPLEX,  
RIBOSOME,

ENDOPLASMIC RETICULUM,  
MITOCHONDRION,  
MICROTUBULE,  
MICROFILAMENT,  
LYSOSOME,  
MICROBODY,  
HYALOPLASM,  
NUCLEUS,  
NUCLEAR ENVELOPE,  
NUCLEAR PORE,

